

McIntosh[®]
OWNER'S MANUAL

MCD7008
COMPACT DISC
CHARGER



OWEN'S MANUAL

IMPORTANT SAFETY INSTRUCTIONS

THESE
INSTRUCTIONS
ARE TO PROTECT
YOU AND THE
McINTOSH
INSTRUMENT.
BE SURE TO
FAMILIARIZE
YOURSELF
WITH THEM

1. Read all instructions - Read the safety and operating instructions before operating the instrument.
2. Retain Instructions - Retain the safety and operating instructions for future reference.
3. Heed warnings - Adhere to warnings and operating instructions.
4. Follow Instructions - Follow all operating and use instructions.

WARNING: TO REDUCE RISK OF FIRE OR ELECTRICAL SHOCK, DO NOT EXPOSE THIS INSTRUMENT TO RAIN OR MOISTURE.

5. Power Sources - Connect the power supply only to the type described in the operating instructions or as marked on the unit.
6. Power-Cord Protection - Route power-supply cords so that they are not likely to be walked on or pinched by items placed upon or against them, paying particular attention to cords at plugs, convenience receptacles, and the point where they exit from the instrument.
7. Ventilation - Locate the instrument for proper ventilation. For example, the instrument should not be placed on a bed, sofa, rug, or similar surface that may block ventilation openings; or, placed in a built-in installation, such as a bookcase or cabinet, that may impede the flow of air through the ventilation openings.
8. Heat - Locate the instrument away from heat sources such as radiators, heat registers, stoves, or other appliance (including amplifiers) that produce heat.
9. Wall or Cabinet Mounting - Mount the instrument in a wall or cabinet only as described in the owner's manual.
10. Water and Moisture - Do not use the instrument near water - for example, near a bathtub, washbowl, kitchen sink, laundry tub, in a wet basement, or near a swimming pool, etc.
11. Cleaning - Clean the instrument by dusting with a dry cloth. Clean the panel with a cloth moistened with a window cleaner.
12. Object and Liquid Entry - Do not permit objects to fall and liquids to spill into the instrument through enclosure openings.
13. Nonuse Periods - Unplug the power cord from the AC power outlet when left unused for a long period of time.
14. Damage Requiring Service - **Service must be performed by qualified service personnel when:**
 - A. The power supply cord or the plug has been damaged; or
 - B. Objects have fallen, or liquid has been spilled into the instrument; or
 - C. The instrument has been exposed to rain; or
 - D. The instrument does not appear to operate normally or exhibits a marked change in performance; or
 - E. The instrument has been dropped, or the enclosure damaged.
15. Servicing - Do not attempt to service beyond that described in the operating instructions. All other service should be referred to qualified service personnel.
16. Grounding or Polarization - Do not defeat the inherent design features of the polarized plug. Non-polarized line cord adaptors will defeat the safety provided by the polarized AC plug.
17. **CAUTION: TO PREVENT ELECTRICAL SHOCK DO NOT USE THIS (POLARIZED) PLUG WITH AN EXTENSION CORD, RECEPTACLE OR OTHER OUTLET UNLESS THE BLADES CAN BE FULLY INSERTED TO PREVENT BLADE EXPOSURE.**

ATTENTION: POUR PREVENIR LES CHOCS ELECTRIQUES PAS UTILISER CETTE FICHE POLARISEE AVEC UN PROLONGATEUR, UNE PRISE DE COURANT OU UNE AUTRE SORTIE DE COURANT, SAUF SI LES LAMES PEUVENT ETRE INSEREES A FOND SANS EN LAISSER AUCUNE PARTIE A DECOUVERT.



The lightning flash with arrowhead, within an equilateral triangle, is intended to alert the user to the presence of uninsulated "dangerous voltage" within the product's enclosure that may be of sufficient magnitude to constitute a risk of electric shock to persons.



CAUTION: TO PREVENT THE RISK OF ELECTRIC SHOCK, DO NOT REMOVE COVER (OR BACK). NO USER-SERVICABLE PARTS INSIDE. REFER SERVICING TO QUALIFIED PERSONNEL



The exclamation point within an equilateral triangle is intended to alert the user to the presence of important operating and maintenance (servicing) instructions in the literature accompanying the appliance.

The serial number, purchase date, and McIntosh Laboratory Service Contract number are important to you for possible insurance claim or future service. Record this information here.

Serial Number	Purchase Date
Service Contract Number	

Upon application, McIntosh Laboratory provides a Service Contract to the original purchaser. Your McIntosh Authorized Service Agency can expedite repairs when you provide the Service Contract with the instrument for repair.

SERVICE CONTRACT.....	4
INTRODUCTION.....	5
TRANSPORT LOCKING SCREW.....	5
HOW TO INSTALL BATTERIES IN THE HR7008 REMOTE CONTROLLER.....	6
HOW TO INSTALL THE PLAYER.....	6
HOW TO CONNECT FOR NORMAL AUDIO PLAYBACK.....	6
REAR PANEL	6, 7
FRONT PANEL CONTROLS.....	7, 8
FRONT PANEL DISPLAYS.....	9
HR7008 REMOTE CONTROLLER PANEL	9
HOW TO LOAD AND PLAYBACK AS A SINGLE DISC PLAYER.....	10
HOW TO PLAYBACK FROM A DESIRED TRACK ON A DISC.....	10
LOCATING A DESIRED POINT ON A DISC.....	11
HOW TO PLAY RANDOM AND REPEAT.....	11
HOW TO LOAD, STORE AND PLAYBACK UP TO 7 DISCS.....	11, 12
HOW TO CHECK LOADED DISC INVENTORY BY USING SCAN.....	12
HOW TO STORE DISC INFORMATION IN TIME DATA MEMORY.....	12
HOW TO MEMORIZE AND SELECT DESIRED TRACKS FOR PLAYBACK.....	12, 13
HOW TO REVIEW THE MEMORY DATA.....	13
HOW TO ERASE ALL STORED TRACKS FROM MEMORY.....	13
HOW TO CHANGE TRACK MEMORY STORAGE CONTENTS.....	14
MEMORY BACKUP.....	14
HOW TO CONNECT AND USE WITH A REMOTE CONTROLLED McINTOSH PREAMPLIFIER, RECEIVER, OR REMOTE CONTROL SYSTEM.....	14
HOW TO PLAYBACK USING THE HR7008 REMOTE CONTROLLER TRANSMITTING DIRECTLY TO THE SENSORS OF A McINTOSH PREAMPLIFIER, RECEIVER, OR REMOTE CONTROL SYSTEM.....	15
IF YOU NEED HELP.....	15, 16
PERFORMANCE DATA.....	17
BLOCK DIAGRAM.....	18
INSTALLATION DIAGRAMS.....	19

TABLE OF CONTENTS

TAKE ADVANTAGE OF 3 YEARS OF CONTRACT SERVICE. . .
FILL IN THE APPLICATION NOW.

Your MCD 7008 Compact Disc Changer will give you many years of satisfactory performance. If you have any questions, please contact,

McIntosh Laboratory Inc.

2 Chambers Street
Binghamton, New York 13903-2699
Phone: 607-723-3512

**McINTOSH
THREE YEAR
SERVICE
CONTRACT**

An application for A THREE YEAR SERVICE CONTRACT is included with this manual. The terms of the contract are:

1. If the instrument covered by this contract becomes defective, McIntosh will provide all parts, materials, and labor needed to return the measured performance of the instrument to the original performance limits free of any charge. The service contract does not cover any shipping costs to and from the authorized service agency or the factory.
2. Any McIntosh authorized service agency will repair all McIntosh instruments at normal service rates. To receive the free service under the terms of the service contract, the service contract certificate must accompany the instrument when taken to the service agency.
3. Always have service done by a McIntosh authorized service agency. If the instrument is modified or damaged as a result of unauthorized repair the service contract will be cancelled. Damage by improper use or mishandling is not covered by the service contract.
4. The service contract is issued to you as the original purchaser. To protect you from misrepresentation this contract cannot be transferred to a second owner.
5. Units in operation outside the United States and Canada are not covered by the McIntosh Factory Service Contract, irrespective of the place of purchase. Nor are units acquired outside the USA and Canada, the purchasers of which should consult with their dealer to ascertain what, if any, service contract or warranty may be available locally.

INTRODUCTION

The McIntosh MCD 7008 Compact Disc Changer offers the ultimate in features and performance. The following information highlights what this CD changer can do for you.

- 1: You can operate the MCD 7008 as a single disc player.
- 2: You can store up to six discs inside the player, as well as a seventh disc used in single disc mode. These discs can be played in any of the following ways.
 - 3: Play all the discs from start to finish automatically in the order that they were loaded into the player.
 - 4: Play any of the discs by direct selection from either the front panel keyboard or the keyboard on the HR7008 hand held remote controller.
 - 5: After selecting a disc, any track on the disc can be played by direct access on the front panel keyboard or hand held remote controller.
 - 6: Select Random Play where the player will select discs and various tracks on the discs in a totally random order. Playback will continue until all tracks on all discs stored in the player have been played. If only one disc is in the player, each track of that disc will be played in random order.
 - 7: Select any number of tracks you wish to hear in any sequence, on any or all of the discs stored in the player. Enter this information into the player's memory. The selected tracks will then play in the order selected. As long as the discs are left in the player the memory is retained, even if the player is turned off.
 - 8: Review which tracks were selected and stored in the memory, as well as the total time of the stored tracks.
 - 9: Select repeat, and the player will play through each disc stored in the player and when finished, start playback again from disc number one and continue playback as long as desired.
 - 10: Scan function causes the player to play only 10 seconds of the first track on each disc to reveal which discs have been loaded into the player.
 - 11: Playback a 3 inch disc without need for an adapter. (Single disc mode only.)

Before connecting the MCD7008, turn the transport locking screw from the "LOCK" position to the "FREE" position. This screw is reached through an access hole on the bottom panel of the player. The player will not operate until the locking screw is turned to the "FREE" position.

For future transport or shipping of the player, remove all discs and turn the unit off. Then set the transport locking screw to the "LOCK" position.

TRANSPORT LOCKING SCREW

HOW TO INSTALL THE BATTERIES IN THE HR7008 REMOTE CONTROLLER

Slide open the cover of the battery compartment. Insert the two supplied size AA batteries into the compartment. Be sure to observe the correct polarity of the batteries as indicated in the battery compartment.

When the batteries are nearing exhaustion, the effective range of the remote controller decreases, and MAY even fail to operate. In this case, replace both batteries with fresh ones.

NOTE:

- Do not use a mixture of old and new batteries.
- Make sure both batteries are of the same type.
- To prevent damage caused by possible battery leakage, remove the batteries from the remote controller if it is not to be used for an extended period of time.
- Never dismantle batteries or dispose of them in fire, as they may explode. Dispose of batteries only in an approved method for proper safety.

HOW TO INSTALL THE PLAYER

The MCD7008 can be placed upright on a table or shelf, standing on its four plastic feet.

The player also can be custom installed in a cabinet of your choice. The panel cutout and player dimensions are shown in the diagrams found on page 19 of this manual.

The player is held in place by two angle brackets mounted to the back panel of the player chassis. The brackets attach to the player with two 6/32 x 3/8 inch machine screws, and to the mounting shelf with two 6 x 1/2 inch wood screws.

Always provide for adequate ventilation. Never place the player directly above a heat generating component such as a high powered amplifier. Cool operation insures a longer operating life for any electronic instrument. Allow at least 1 1/2 inches (3.8 cm) above the player so that airflow is not obstructed. The recommended minimum space for a custom installation is 18 1/2 inches (47.2 cm) wide, 6 inches (15.2 cm) high by 17 1/2 inches (44.5 cm) deep including connectors. Allow 1 inch (2.54 cm) in front of the mounting panel for knob clearance.

HOW TO CONNECT FOR NORMAL AUDIO PLAYBACK

The last page of this manual folds out to show photographs of the front and rear panel of the MCD7008. Fold it out to assist you in locating the volume control and identifying all the pushbuttons and their functions.

NORMAL PLAYBACK

Connect a shielded cable from the LEFT (L), of either the FIXED or VARIABLE ANALOG OUTPUT jacks to the LEFT channel CD INPUT of the amplifier, preamplifier or receiver being used. Connect the RIGHT (R) channel OUTPUT to a similar RIGHT channel input.

MAKE SURE THE DIGITAL OUTPUT SWITCH IS IN THE OFF POSITION

AC POWER

Connect the player power cord to an AC outlet, 50 or 60Hz, 120 volts. This can be a wall outlet or an AC outlet provided on accessory equipment.

REAR PANEL

ANALOG OUTPUT/FIXED

Provides a fixed output volume level.

REAR PANEL

ANALOG OUTPUT/VARIABLE

Provides a variable output volume level that can be controlled by the front panel Volume control as well as by the Up[▲]and Down[▼] pushbuttons on the HR7008 hand held remote controller.

CONTROL

This connector is used with the 7 pin DIN cable to connect to a McIntosh remote controlled preamplifier, receiver, or remote control system. This will allow their hand held remote controllers to operate six functions of the MCD 7008 player.

These functions are PLAY, NEXT (Track), BACK (Track), NEXT (Discs 1 through 6), BACK (Single Disc) and STOP NEXT (Track) and BACK (Track) can be performed after playback has started. NEXT (Discs 1 through 6) and BACK (Single Disc) can be performed when the player is in STOP mode.

Press the NEXT button and you will select disc number 1. Press NEXT again as desired to select discs 2 through 6. Press BACK to select the disc in the SINGLE position.

DATA IN

This connector jack allows serial remote control from an accessory component. An example would be to connect to this jack from the DATA OUT jack on a McIntosh preamplifier or remote control system, so the HR7008 Remote Controller will transmit to the preamplifier. This method of operation provides all the functions of the HR7008 Remote Controller, transmitted to the preamplifier sensor. It is then not necessary to point the HR7008 toward the CD player for all normal player functions.

DIGITAL OUTPUT/COAXIAL

An electrical coaxial output connector is provided for external digital signal processing.

OFF-ON SELECTOR SWITCH:

OFF is for normal operation of the player when using either pair of analog output jacks.

ON provides the digital output at the COAXIAL output jack. This digital signal may then be connected to an external Digital-to-Analog Converter or digital signal processor with a coaxial cable.

AC POWER

The MCD 7008 is designed to operate on 50 or 60Hz, 120 volt AC power. It draws 22 watts of power when operating.

FRONT PANEL

MEMORY

A: CANCEL: Used to cancel selected disc tracks stored in memory.

B: REVIEW: Allows you to review all the selected tracks on all discs you have stored in memory.

C: ENTER: Used to store each selected track in memory.

D: POWER: Turns the main power ON or OFF.

E: TIME DATA: Used for reading into the player's memory the number of tracks and playing times of all the discs stored into the player.

F: MODE: Allows you to select the following displays.

TIME mode: Elapsed time of the current track.

FRONT PANEL

TOTAL mode: Elapsed time since the start of the first track.

REMAINING mode: Time remaining on disc.

SERVICE mode: Total number of tracks and total playing time of the disc are shown. At the end of 5 seconds the display switches back to TIME mode.

DISC

G: SINGLE: Used when the player is to be operated as a single disc unit.

H: PUSHBUTTONS 1 THROUGH 6: Used when discs are stored inside the player.

TRACK

I: TEN BUTTON KEYPAD: Used for entering disc track numbers from 1 to 99.

J: CLEAR: Used to cancel any track numbers just selected.

OPERATING MODES

K: STORE: Used to insert up to 6 discs inside the player.

L: LOAD: Used to insert and remove a disc in the player for single disc operation. It is also used to remove discs stored inside the player.

M: PLAY: Starts playback in all modes of operation.

N: RANDOM: Causes the player to play all discs and tracks in a totally random order. Playback will continue until all discs and tracks have been played. If a single disc is in the player, each of the tracks on that disc will be played in a random order.

O: REV (Reverse): Pressing and holding this button causes fast movement backwards on a disc. The output is muted by 12dB during this operation. The speed of movement increases after 3 seconds.

P: FF (Fast Forward): Allows a similar fast forward movement on the disc.

Q: BACK: Moves the player back to the beginning of the previous track, or the beginning of the track being played.

R: NEXT: Moves the player forward to the next track.

S: STOP: Causes the player to stop playing and remain in a standby mode.

T: PAUSE: Stops the playback at the point the button is pressed. Resume playback by pushing the PLAY button.

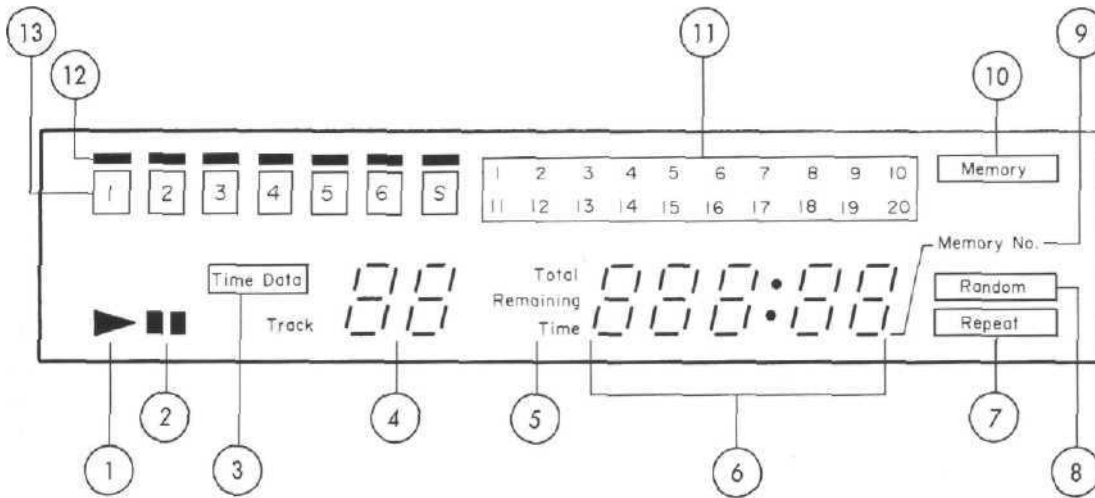
U: REPEAT: Causes the player to play each disc stored, and when finished will start playback again from disc one and continue as long as desired. If a single disc is stored, that disc will be played over and over from the beginning track. To cancel REPEAT, press REPEAT again or the STOP button.

V: SCAN: Plays the first ten seconds of each disc stored in the player to identify the disc inventory, starting from disc 1.

W: VOLUME: Adjusts the level of the VARIABLE OUTPUTS as well as the headphone listening. The VARIABLE OUTPUTS can also be adjusted by Up [▲] and Down [▼] pushbuttons on the HR7008 remote controller. The volume control is a precision analog motor driven unit.

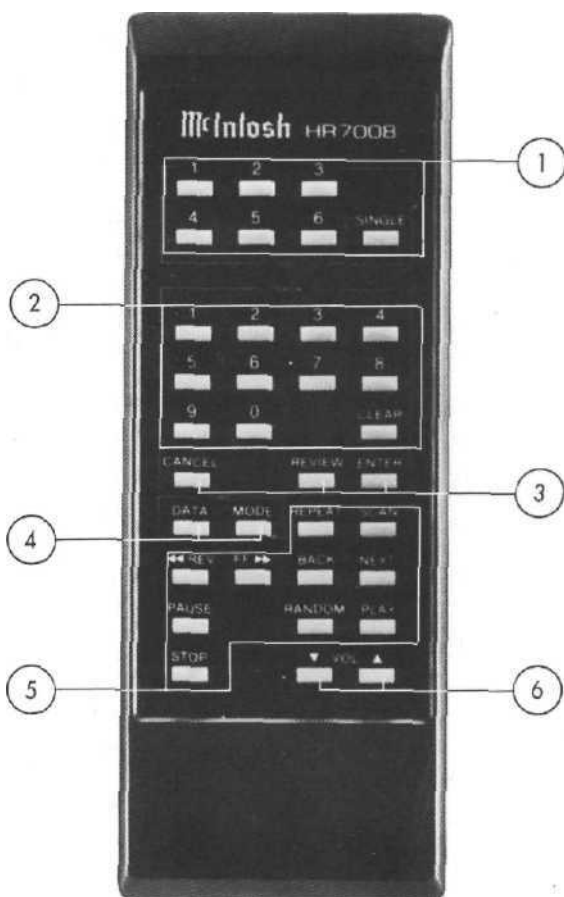
X: PHONES: An output for standard dynamic headphone listening. Headphones with an impedance rating from 8 to 1000 ohms can be used.

FRONT PANEL DISPLAYS



- 1: PLAY indicator
- 2: PAUSE indicator
- 3: TIME DATA indicator
- 4: TRACK Number indicator,
(Up to 99 tracks can be displayed)
- 5: TIME Counter Mode indicator
- 6: TIME Counter
- 7: REPEAT indicator
- 8: RANDOM indicator
- 9: MEMORY NO. indicator
- 10: MEMORY indicator
- 11: NUMBER OF TRACKS ON DISC indicators
- 12: SELECTED DISC indicators
- 13: DISC NUMBER indicators

HR7008 REMOTE CONTROLLER PANEL



- 1: DISC Number buttons
- 2: TRACK Number and CLEAR buttons
- 3: MEMORY buttons
- 4: TIME buttons
- 5: DISC CONTROL buttons
- 6: VOLUME buttons
(Variable Outputs only)

(All functions except LOAD, STORE and POWER ON-OFF can be controlled by the HR7008 Remote Controller)

HOW TO LOAD AND PLAYBACK AS A SINGLE DISC PLAYER

- 1: Press the DISC SINGLE button. (The red indicator will light above the S on the Disc number display).
- 2: Press the LOAD button. (The CD drawer will open).
- 3: Place a CD on the open tray with the label side facing UP
- 4: Press the PLAY button. (The drawer closes and playback starts at track 1.)
You may also start playback after step 3, by first pressing LOAD, and then PLAY.
- 5: To temporarily interrupt playback. Press the PAUSE button.
- 6: To resume playback press the PLAY button.
- 7: Press the STOP button to stop playback.
- 8: To remove the disc, press the LOAD button. (The disc tray will open.)

OPTIONAL METHOD TO CLOSE DISC TRAY

If the disc tray is open, a gentle inward push on the tray will activate the tray switch and cause it to slide into the player. This functions the same as the LOAD switch.

3 INCH COMPACT DISCS

3 inch compact discs can be played ONLY in the single disc mode. The 3 inch adaptor is built into the disc tray. Do not try to insert a 3 inch disc with a disc adaptor installed. It may cause damage or jam inside the player,

HOW TO LISTEN WITH HEADPHONES

Connect a pair of headphones into the front panel PHONES jack and adjust the volume as desired with the VOLUME control. Headphones with an impedance rating between 8 and 1000 ohms can be used.

IF A DISC IS INSERTED UPSIDE DOWN

When playback is attempted, the disc will be ejected automatically. Reinsert the disc with the label facing UP.

HOW TO PLAYBACK FROM A DESIRED TRACK ON A DISC

(These operations can be done with the hand held HR7008 or on the MCD7008 player front panel.)

SKIPSEARCH

1: Press the BACK button to start play from the beginning of the track playing. Press the BACK button a second time to go back to the beginning of the track prior to the one playing.

2: Press the NEXT button to start play from the beginning of the next track.

Keeping the button depressed will skip from track to track in either direction.

DIRECT TRACK SELECTION

Enter the number of the desired track by pressing the appropriate button on the TRACK numeric keypad. The selected track number will flash on the display panel for 10 seconds.

Press the PLAY button while the number is still flashing. If a wrong track number is entered, press the CLEAR button and enter the correct number.

(Fast Forward or Reverse)

Pressing the FF (Fast Forward) button moves the player forward rapidly through the disc.

Pressing the REV (Reverse) button moves the player rapidly in the reverse direction.

If the button is depressed for more than 3 seconds the search speed increases. The sound output is muted by 12dB during these operations.

- 1: Press the STOP BUTTON. (Unnecessary if unit is already in STOP mode).
- 2: Press the RANDOM button. The player will start playing all discs and tracks in a totally random order. Press RANDOM again and a next track or disc will be selected and RANDOM play will continue.

To cancel random play, press the STOP or LOAD button.

- 1: Press the REPEAT button.
- 2: Press the PLAY button.

To cancel REPEAT play, press the REPEAT button a second time or press the load button. REPEAT play can be activated either from STOP or during playback.

REPEAT play can be combined with RANDOM play to continuously play all discs and tracks in a totally random order.

- 1: Press the STORE button. The disc tray will slide out.
- 2: Place a disc on the tray and press the STORE button again. The disc tray will move into the player and store the disc in the empty slot number 1. The disc tray will slide out again ready for the next disc to be loaded.
- 3: Repeat steps 1 and 2 to load more discs. (When all six internal slots are loaded, the disc in slot number 1 is retrieved and the player enters the STOP mode).
- 4: To load the seventh or SINGLE disc, press the SINGLE button. The tray for the single disc will move into position. Press LOAD and the single disc tray will slide out. Place the seventh disc on the tray and press LOAD again. The single disc will move into the player and there will now be a total of 7 discs stored.
- 5: Press the PLAY button. The player will start playback of track number 1 on disc 1. It will continue to play through all 6 discs. The disc placed in the SINGLE disc section is disc number seven, and it will play after the disc in slot 6 has finished playing. After the single disc has finished, the player will move back to disc 1 and go to STOP mode.
- 6: To select a desired disc, press the DISC number button on the keypad, (1 through 6 or SINGLE), and then press the PLAY button. If the number of an empty slot is pressed, the player will remain inactive.

LOCATING A DESIRED POINT ON A DISC

HOW TO PLAY RANDOM

HOW TO PLAY REPEAT

HOW TO LOAD, STORE, AND PLAYBACK UP TO 7 DISCS

HOW TO LOAD, STORE, AND PLAYBACK UP TO 7 DISCS

7: To remove a disc, press the disc number (1 through 6 or SINGLE) button. A RED indicator starts flashing above the disc number on the display. Press the LOAD button. The tray will slide out allowing you to remove the disc.

8: To remove ALL discs. Start with disc number 1 and press LOAD. The drawer will open allowing you to remove the disc. Press LOAD again and the second disc will be placed in position to be removed. Press LOAD again and the disc drawer will open allowing the second disc to be removed. Repeat this procedure to remove further discs.

If the STORE button is pressed without a disc on the tray, the loading operation will be canceled. The disc in slot 1 will be placed in position and the player enters the STOP mode.

3 INCH COMPACT DISCS

Place 3 inch discs ONLY in the SINGLE tray. Do not attempt to place them in any of the slots 1 through 6. Do not place an adapter on a 3 inch disc for use with this player. This can lead to damage or may cause the adapter and disc to jam inside the player.

HOW TO CHECK LOADED DISC INVENTORY BY USING SCAN

Press the SCAN button. The player will automatically select disc 1, play track 1 for 10 seconds, then do the same on all of the discs stored in the player. This allows identification of the music on each of the discs. All 6 discs as well as the 7th single disc will be sampled.

HOW TO STORE DISC INFORMATION IN TIME DATA MEMORY

Time data including Total Number of Tracks, Total Playing Time, Playing Time for each track of all discs loaded into the player can be placed into the player's memory by pressing the TIME DATA button.

- 1: Cancel the memory of RANDOM PLAY mode if it had been selected previously.
- 2: Press the STOP button. (Unnecessary if player is already in STOP mode.)
- 3: Press the TIME DATA button. The time data of each disc (including the disc in the SINGLE section), is automatically retrieved and stored in the player's memory, starting with the disc in slot 1. When all the discs have been checked and data stored, the number of tracks and total playing time of each disc are then displayed for 2 seconds in turn.
- 4: The player will then return to the condition active before the TIME DATA button was pushed.

COMPLETE TIME DATA ON ALL THE DISCS WILL NOW BE IN THE PLAYER MEMORY, READY FOR SELECTION OF SPECIFIC DISCS AND TRACKS.

To CANCEL the memorizing operation, press any operation button such as STOP or PLAY, or one of the numeric keypad buttons.

HOW TO MEMORIZE AND SELECT DESIRED TRACKS FOR PLAYBACK

(The disc information first must have been stored in the TIME DATA memory before this operation can occur.)

- 1: Press the STOP button.
- 2: Select the desired disc by pressing a DISC button.

HOW TO MEMORIZE AND SELECT DESIRED TRACKS FOR PLAYBACK

- 3: Verify that the track number list of the selected disc is shown on the display panel.
- 4: Select the first track number you want to memorize by pressing the correct button on the TRACK keypad. This track number will light on the display panel.
- 5: Press the ENTER button. The MEMORY indicator will light on the display panel.
Memory number 1 will also light on the display panel indicating that this is the first memory selection. Only the track numbers memorized will light on the track display panel. The player memory will accept track numbers up to 99.
- 6: Repeat steps 2 through 5 to select more discs and tracks in any order you wish.
- 7: Press PLAY. The player will start playback from the first track selected on the first disc. Playback will continue through each disc and track selected in the order they were stored in memory.

A TOTAL OF 50 TRACKS CAN BE PLACED IN PLAYER MEMORY. IF YOU ATTEMPT TO STORE MORE THAN 50 DISCS IN MEMORY, A DISPLAY INDICATING "FULL" WILL APPEAR.

THE MEMORY WILL BE RETAINED EVEN WHEN THE PLAYER IS TURNED OFF, AS LONG AS THE MEMORIZED DISCS ARE LEFT IN THE PLAYER.

HOW TO REVIEW MEMORY

- 1: The player must be in the STOP mode.
- 2: Press the REVIEW button and the memory number, corresponding disc and track number of the first memory entry will be displayed. Press the TIME MODE button IN and hold it. The time of the track stored in memory will be displayed. Each time you press REVIEW to check additional tracks stored in memory, press TIME MODE to indicate the total accumulated time of all the tracks.
When you press REVIEW for the last track stored, press and hold the TIME MODE button to read the total cumulative time of all tracks selected.
During playback of the memory stored tracks, the TIME REMAINING mode refers to the time of the stored tracks.
Track numbers up to 99 can be selected and stored in memory. However, playing time for track numbers above 32 will not be displayed nor included in the total playing time.
- 3: Cancel the REVIEW mode by pressing and holding the REVIEW button for more than 2 seconds. The REVIEW mode is automatically canceled if the REVIEW button is not pressed for an interval of 10 seconds or more.

HOW TO ERASE ALL STORED TRACKS FROM MEMORY

If you wish to remove ALL the memory data contents, press the CANCEL button and all the stored memory will be erased. A completely new memory track storage program can then be created.

HOW TO CHANGE TRACK MEMORY STORAGE CONTENTS

- 1: Press STOP to make sure the player is in STOP mode.
- 2: Press REVIEW to display each track number stored in memory.
- 3: When you reach the track number you wish to change, press the track number buttons for the NEW track you wish to store.
- 4: Press ENTER to store the new track number.

Each of these two operations must be performed with 10 seconds.

MEMORY BACKUP

The MCD7008 has a built-in lithium battery for memory backup. The data for each disc and track entered into memory will be preserved, even if the player is turned off or disconnected from the AC power, as long as that disc is not removed.

The life of the lithium battery is approximately 5 years. When the battery is exhausted, the disc numbers 1 through 6 and S will start to blink and the player will automatically check each disc slot each time the power is turned on. When this occurs, contact your McIntosh dealer for a battery replacement.

ALWAYS HAVE THE MEMORY BATTERY REPLACEMENT DONE BY YOUR AUTHORIZED McIntOSH DEALER OR SERVICE AGENCY.

HOW TO CONNECT AND PLAYBACK USING A McINTOSH REMOTE CONTROLLED PREAMPLIFIER, RECEIVER, OR REMOTE CONTROL SYSTEM

Connect one end of the 7 pin DIN cable to the MCD7008 rear panel CONTROL connector. Connect the other end to the matching connector on a McIntosh remote controlled preamplifier or remote control system. This allows the preamplifier or remote control system hand held controller to perform six functions of the MCD7008 player.

PLAY, STOP, NEXT (Track) and BACK (Track) selection can be performed after Play has started.

When the MCD7008 is in STOP mode, you can select NEXT (Discs 1 through 6) or BACK (Single Disc).

NEXT: The first time you press NEXT, disc number 1 is selected. Press again as desired to select discs 2 through 6.

BACK: The first time you press BACK, you will select the disc stored in the SINGLE position.
FOR EXAMPLE: To select disc number 6 from the Single disc play mode, press STOP and then press NEXT six times.

To select disc number 2 next, press STOP and then press NEXT twice.

To select the disc in the SINGLE disc slot, press stop and then press BACK.

Connect a cable from the MCD7008 DATA IN jack to the DATA OUT jack on the other instrument being used. This allows the HR 7008 Remote Controller to transmit directly to the McIntosh preamplifier or Remote Control System sensors, and all player functions can be performed.

**HOW TO PLAYBACK
USING THE HR7008
CONTROLLER
TRANSMITTING
DIRECTLY TO A
McINTOSH
PREAMPLIFIER,
RECEIVER OR
REMOTE CONTROL
SYSTEM SENSOR
USING THE DATA
JACKS**

CONDITIONS AND SOLUTIONS

The letters ERR appear on the display panel and the player will not function.

On very rare occasions the system control may lock up or freeze operation. To reset the system control, simply turn the player main power OFF for a few seconds and then back ON. If this condition should continue to occur, contact your authorized McIntosh dealer or service organization for assistance.

The disc tray will not open.

Make sure the player locking screw, accessible from the bottom panel, is set to the FREE position.

You are unable to playback any discs.

Be sure all the discs are clean and with no fingerprints. Clean the discs with a soft dry cloth, gently wiping from the center of the disc to the outer edge. Do not rub in a circular motion.

If a disc has had a stabilizer installed, remove the stabilizer.

If two discs have accidentally been stacked in a single tray, remove the second disc.

If a disc is inserted upside down, remove it and reinstall it with the label side UP

It is possible in some environments for moisture to condense on the laser lens. Turn the player on in the standby mode for at least 30 minutes to one hour, and then start operation.

Sound is uneven or the player mistracks the disc.

The Disc surface may be dirty. Clean the discs in the manner described above.

If a problem in playback occurs at the same point in a given disc, the disc may be scratched, damaged or defective. You may skip to the next track, or replace the disc.

A disc stabilizer may be on the disc. Remove the stabilizer.

Two discs may be stacked in the same tray. Remove the second disc.

Check the condition of all equipment interconnections and their cables. Make sure all cable connectors are firmly and fully installed into their respective jacks.

Hum is present in the playback sound.

Check the condition of all interconnecting cables. Make sure all cable connectors are firmly and fully installed in their respective jacks.

**IF YOU
NEED HELP**

**IF YOU
NEED HELP**

Position the player away from fluorescent lights or the power transformers of other equipment, (power amplifiers in particular).

Memory play does not function.

Repeat Memory programming.

The hand held HR7008 does not function.

The batteries could be exhausted. Replace the batteries with fresh ones.

Make sure the batteries are inserted in the controller with the correct polarity as indicated in the battery compartment.

Be sure to point the controller toward the front panel of the player where its sensor is located.

Make sure no obstacles or furniture is obstructing the path of the infrared signal from the remote controller to the player front panel.

PERFORMANCE DATA

AUDIO

FREQUENCY RESPONSE
5-20,000Hz, +0, -0.3dB

DYNAMIC RANGE
100dB

SIGNAL-TO-NOISE RATIO
107dB (A weighted)

CHANNEL SEPARATION
100dB (at 1000Hz)

TOTAL HARMONIC DISTORTION
0.002% or better (At 1000Hz)

WOW AND FLUTTER
Quartz crystal precision

SAMPLING RATE
352.8kHz

D/A CONVERSION
Eight times oversampling (352.8kHz) with digital filter and two 20 bit D/A converters.

ERROR CORRECTION SYSTEM
Cross Interleave Reed Solomon Code (CIRC)

OPTICAL READOUT SYSTEM

LASER
Semi-conductor AlGaAs, 780 nm wave length

SIGNAL FORMAT

SAMPLING FREQUENCY
44.1kHz

QUANTIZATION
16 bit linear/channel

POWER SUPPLY
120V, 50/60HZ, 22W

HR7008 REMOTE CONTROLLER

Infrared Pulse System; 3V DC (1.5V x 2), weight (with batteries), 5 Oz (142g)

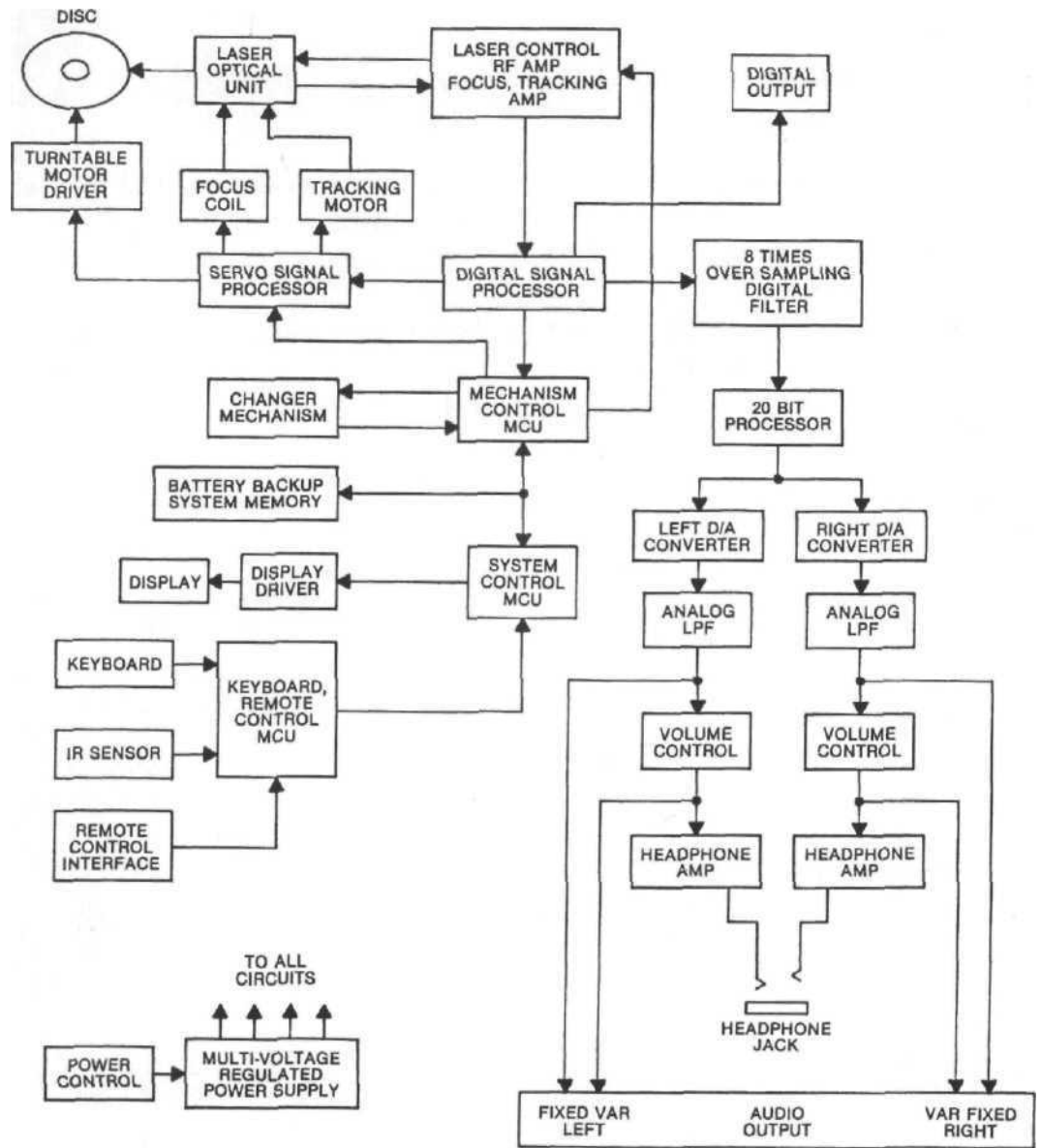
MECHANICAL

SIZE
Front panel measures 17 1/2 inches (44.5 cm) wide, by 5 3/8 inches (13.7 cm) high. Depth behind front panel is 17 1/2 inches (44.5 cm) including clearance for connectors. Knob clearance required in front of the mounting panel is 3/4 inches (1.9 cm).

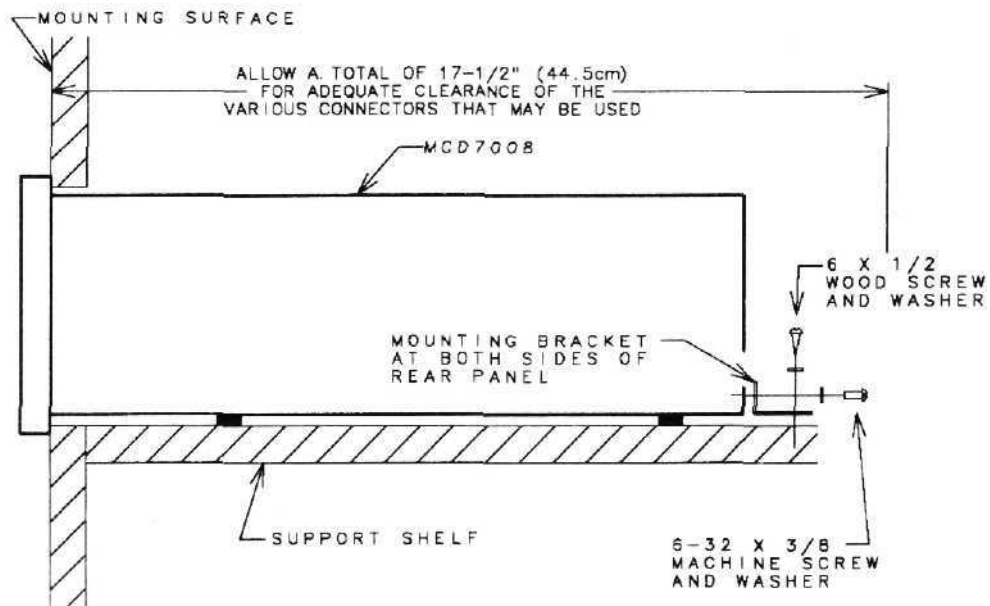
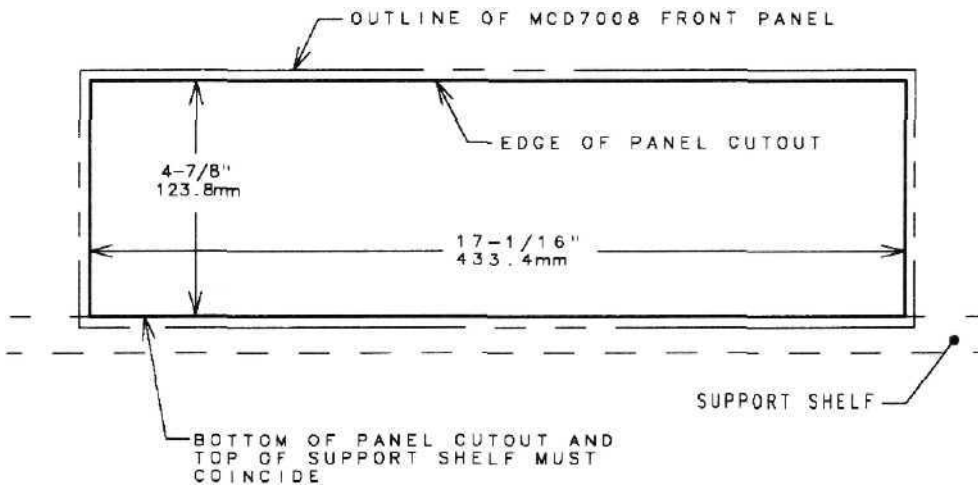
FINISH
Front panel is glass with gold/teal nomenclature illumination with anodized gold and black aluminum. Chassis is black.

WEIGHT
24.5 pounds (11.2 Kg) Net; 38 pounds (17.3 kg) in shipping carton.

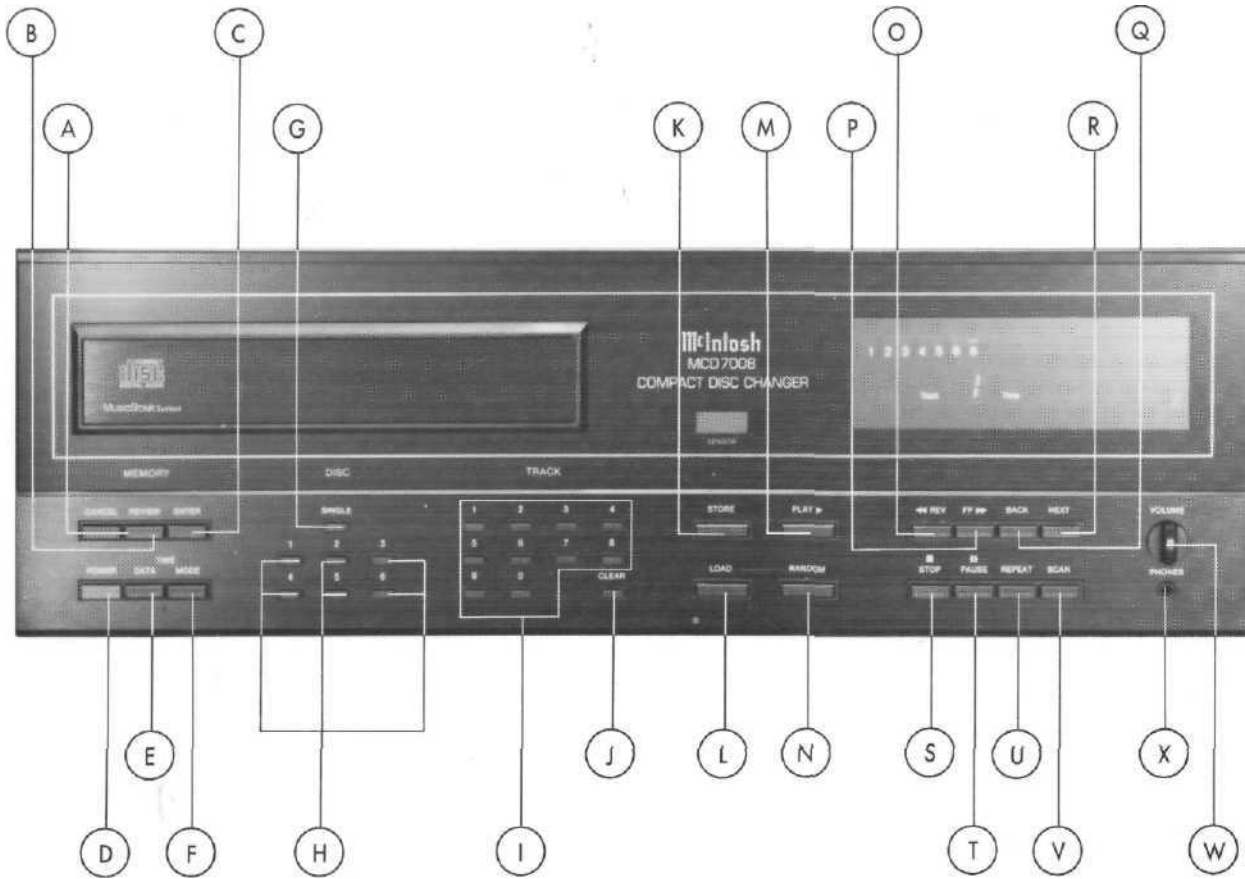
BLOCK DIAGRAM



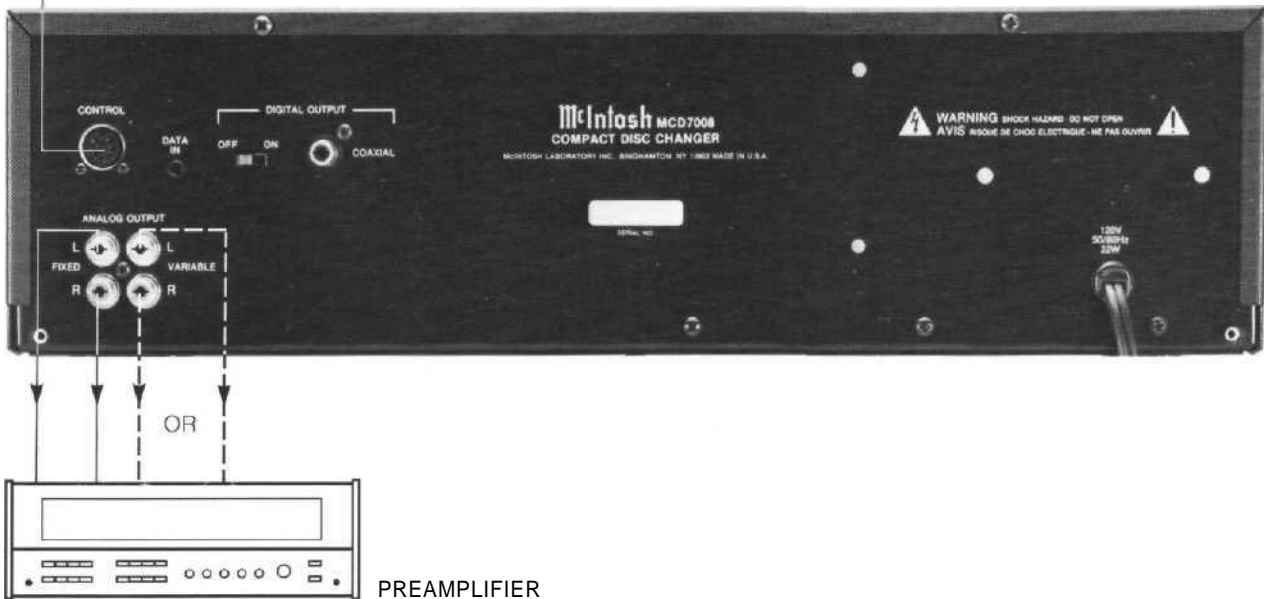
INSTALLATION DIAGRAMS



The letters correspond to the paragraphs on pages 7 and 8.



↑ TO CD CONTROL CONNECTOR ON A McIntOSH REMOTE CONTROLLED PREAMPLIFIER, RECEIVER OR REMOTE CONTROL SYSTEM.



Radon III

THE UNIVERSITY OF CHICAGO
PRESS

Published by the University of Chicago Press, 5 East Lake Street, Chicago, Illinois 60607
© 1995 by the University of Chicago Press



McINTOSH LABORATORY INC.
2 CHAMBERS STREET, BINGHAMTON, NEW YORK 13903-2699

The continuous improvement of its products is the policy of McIntosh Laboratory
Incorporated who reserve the right to improve design without notice.
Printed in the U.S.A.